



DIESEL FORKLIFT FD160 



**Hunan Kamuja Machinery & Equipment Co.,Ltd**



A Certificated Company of GB/T 19001-2016  
ISO 9001:2015

## INTRODUCTION

Heavy duty forklift series FD, with many years of design and manufacturing experience, advanced technology. Products are widely used in logistics, stone processing, ports and terminals, and exported to foreign countries.

## FEATURES

- ① The engine adopts a turbocharged engine with low fuel consumption, which has good power performance and large torque reserve.
- ② The braking system adopts the mature products of the manufacturer.  
The brake is a disc brake, with fast heat dissipation, light weight, simple structure and convenient adjustment. It has good high temperature resistance performance under high load and stable braking effect.
- ③ The gearbox adopts domestic brand gearbox, which has good driving performance and traction performance. It is easy to maintain, economical and applicable, the accessories have good versatility.
- ④ The operating system adopts the pilot valve to control the working system. Simple, convenient and comfortable operation. While reducing the labor intensity of the driver, the work efficiency is improved.
- ⑤ Hydraulic system, double pump confluence, small system flow, low power consumption, stable performance.
- ⑥ The electrical system is equipped with maintenance-free batteries. Flame retardant wire and sheath, electrical components.
- ⑦ The cab is luxurious with shock absorption, equipped with sunroof, heating and cooling air conditioner, wide field of vision and comfortable seat. With explosion-proof film, explosion-proof, heat insulation. Anti-glare, sound insulation.
- ⑧ The fork adopts high-strength, mature products of the manufacturer, which can double the service life.
- ⑨ Tire rim, no spoke steel rim, bear heavy load. Puncture-resistant high-strength tires.
- ⑩ Reinforced drive axle, high-strength heavy-duty planetary wheel-side reduction drive axle. The axle housing has higher strength and greater bearing capacity. With the stability and stability.

### HUNAN KAMUJA MACHINERY & EQUIPMENT CO.,LTD.

Room 818, 4th Floor, Chang Tong Logistic Center, No.18 Qingzhuhu Road, Changsha, Hunan, China

Tel: +86 0731 88677248 alvaro.jin@kamuja.cn [www.kamuja.cn](http://www.kamuja.cn)



Certificated Company of GB/T 19001-2016/ISO 9001:2015

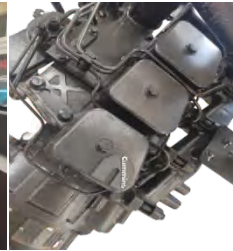
**DETAILS**



Side Shifter(Optional)



Cab & AC



Cummins Motor



LED Lights



Vehicle Lights



Alarm & Lights

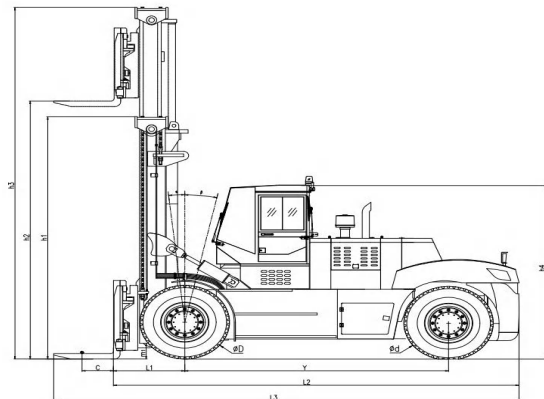
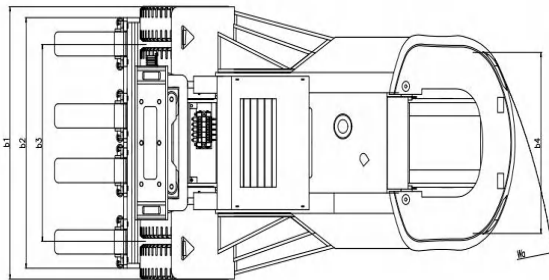


Joystick

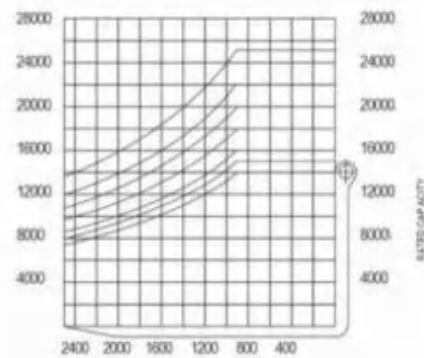
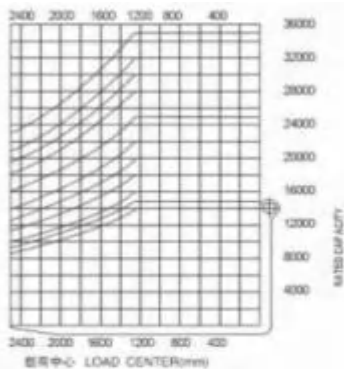


Digital Monitor

**OVERALL**



**CAPACITY CHART**



**HUNAN KAMUJA MACHINERY & EQUIPMENT CO.,LTD.**

Room 818, 4th Floor, Chang Tong Logistic Center, No.18 Qingzhuhu Road, Changsha, Hunan, China

Tel: +86 0731 88677248 alvaro.jin@kamuja.cn [www.kamuja.cn](http://www.kamuja.cn)



Certificated Company of GB/T 19001-2016/ISO 9001:2015

## OPTIONAL ATTACHMENTS



Multi-functional soft bag clip



Brick clamp



Roll clip



String rod



Trash clip



Push-puller



Side shifter



Carton holder

## Optional Devices and Accessories

- Tilt cylinder jacket
- Dual drive wheel
- Cab
- Overhead exhaust device
- User specified color
- Cab heater
- Rear working light
- Alarm lamp
- Solid tyre
- Middle exhaust device
- Exhaust fire protection
- Suspension seat
- Weighing system
- Auxiliary hydraulic valve assembly
- Extinguisher
- Copper water tank
- LED rear light
- Double air filter

## Optional Fittings

- Roll clip
- Rotate the flat clamp
- Load stabilizer
- Multi-purpose bucket clamp
- Soft clip
- Can clip
- Miter clamp
- Boom
- String rod
- Side shifter
- Swivel fork
- Fork extension cover
- Load ejector
- Carton clip
- Position ejector
- Bucket
- Lifting hook
- Extended fork

## Special Equipment for Mast

- Wide view full free Stage II Mast
- Wide field of view full free Stage III Mast
- Special fork

### HUNAN KAMUJA MACHINERY & EQUIPMENT CO.,LTD.

Room 818, 4th Floor, Chang Tong Logistic Center, No.18 Qingzhuhu Road, Changsha, Hunan, China

Tel: +86 0731 88677248 alvaro.jin@kamuja.cn [www.kamuja.cn](http://www.kamuja.cn)



Certificated Company of GB/T 19001-2016/ISO 9001:2015





## SPECIFICATIONS

Item	Specification	Unit	FD160
Features	Rated Load	kg	16000
	Load center	C mm	900
	Wheelbase	Y mm	3600
Weight	Weight	kg	23000
Chassis	Tire Specs:Front		12.00-24-20PR
	Tire Specs:Rear		12.00-20-18PR
	Tire Qty,front/rear(X-drive wheels)		4/2
	Wheel tread:Front	b3 mm	1850
	Wheel tread:Rear	b4 mm	2130
Dimensions	Mast/carriage tilt angel(front/rear)	$\alpha\beta$ Degree(*)	6/12
	Mast height(front lowering)	h1 mm	3460
	Mast lifting height	h2 mm	3500
	Max.height	h3 mm	5180
	Height to head guard(height to cab)	h4 mm	3365
	Overall height (with forks)	mm	7200
	Fork front vertical surface to the rear end of the vehicle	L2 mm	5180
	Overall width	b1 mm	2550
	Fork dimension	L4 mm	1800*200*90
	Fork carriage width	b2 mm	2500
	Mast min ground (with load)	m1 mm	270
	Wheelbase center min ground (with load)	L1 mm	310
	Min.turning Radius	Wa mm	5050
	Travel speed(with load/w.o load)	Km/h	22/30
Performance	Mast.lifting speed (w/. load/w/.o load)	Mm/s	240/300
	Traction	KN	130
	Gradeability (w/. /w/.o load)	%	20/22
Engine	Engine brand/model	Emission II	Cummins6BTAA5.9-C190 6.7L142kw 2200rpm/min
		Emission III	CumminsQSB6.7-C190 6.7L142kw 2200r/min
		Rated	129(Kw)
		Cylinder	6
Others	Transmission gears(Front/rears)		2/1

※ The technical information may vary by the update policy, the changes will be without prior notice.

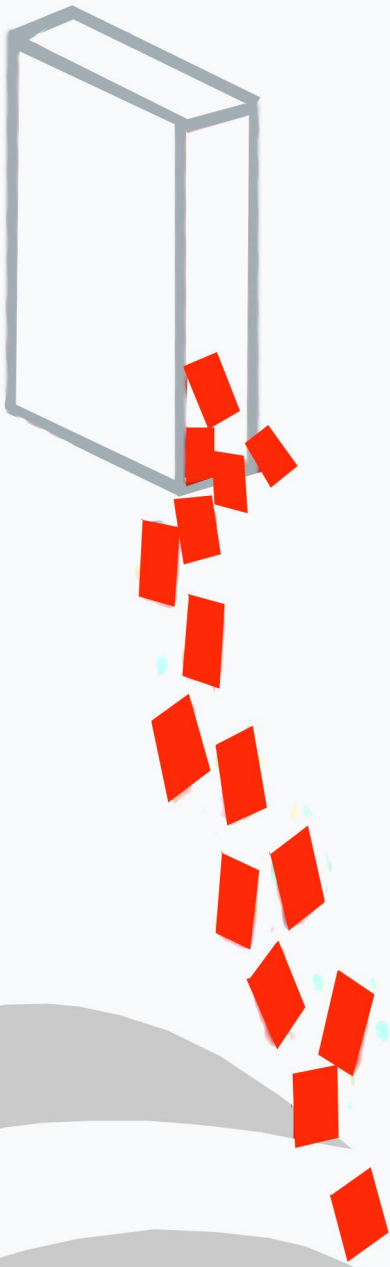
### HUNAN KAMUJA MACHINERY & EQUIPMENT CO.,LTD.

Room 818, 4th Floor, Chang Tong Logistic Center, No.18 Qingzhuhu Road, Changsha, Hunan, China

Tel: +86 0731 88677248 alvaro.jin@kamuja.cn [www.kamuja.cn](http://www.kamuja.cn)



Certificated Company of GB/T 19001-2016/ISO 9001:2015



## Hunan Kamuja Machinery & Equipment Co.,Ltd

Address: Qingzhu Hu Road N.18, Chang Tong Logistic Center Floor 4 Room 818,  
Jinxia Economic Development Zone, Changsha City, Hunan Province, P.R of China.

333 SE 2nd Avenue Suit 2000 Miami FL 33131. USA

Tel: +86 731 8867 7248 e-mail: info@kamuja.cn

Web site: www.kamuja.cn



A Certificated Company of GB/T 19001-2016/  
ISO 9001:2015